

Fig. S3 Heatmap of outgroup- f_3 statistics of the form f_3 (Qiang/Yi, Tibeto-Burman; Mbuti).

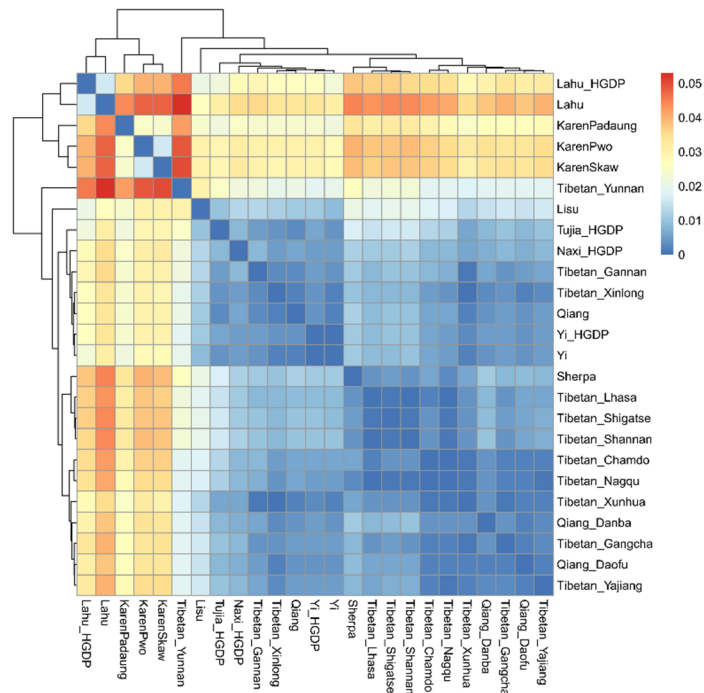


Fig. S4 Pairwise F_{st} values showing genetic relationships between the Tibeto-Burman groups populations based on shared genetic drift.

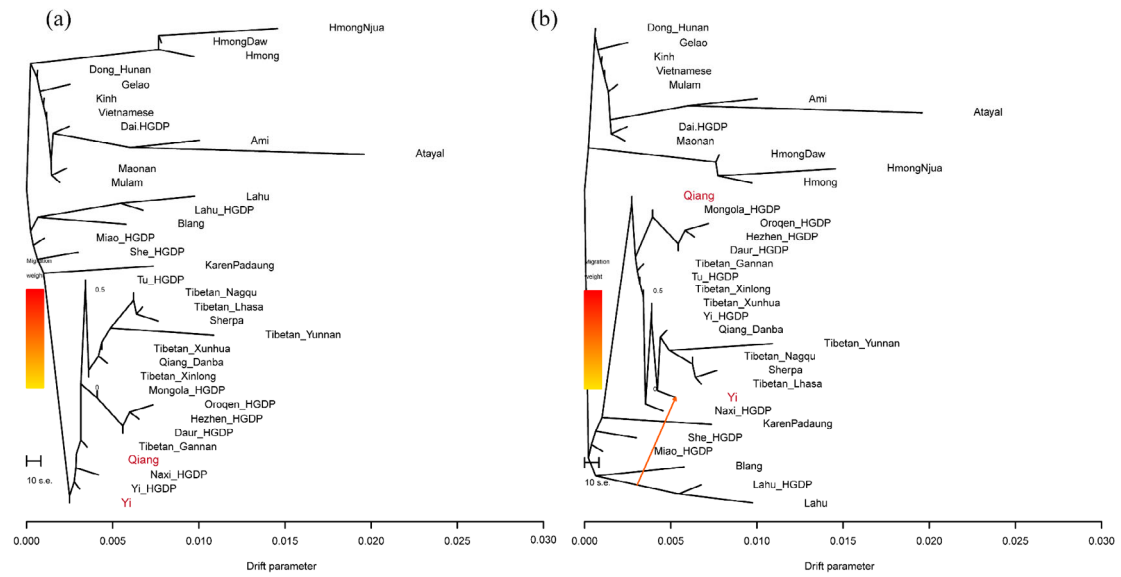


Fig. S5 Maximum likelihood phylogenetic tree based on TreeMix. (a) Treemix result with 0 migration events. (b) TreeMix result with 1 migration event.

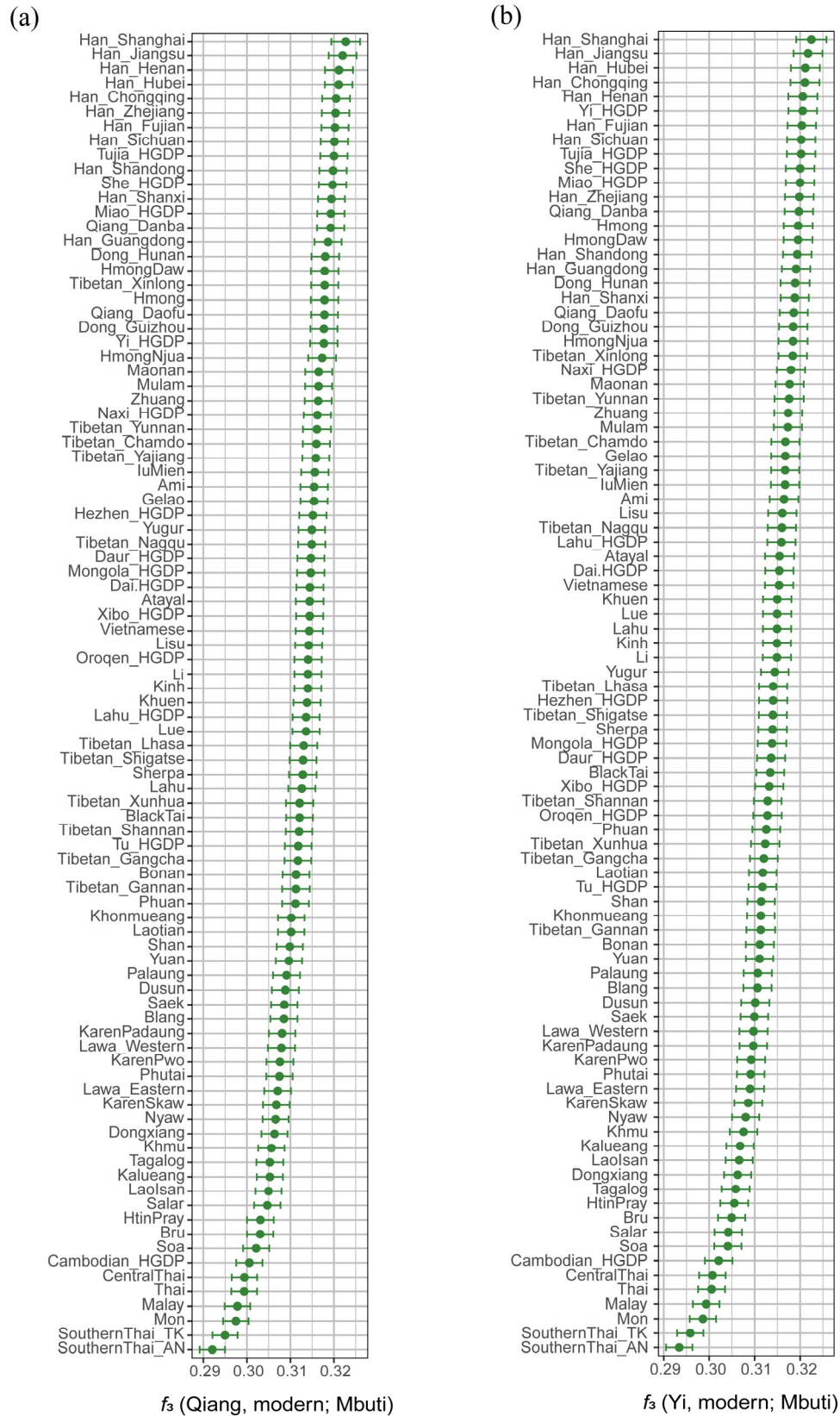


Fig. S6 Shared genetic drift based on outgroup- f_3 statistics analysis. (a, b) Outgroup- f_3 (Qiang/Yi, ancient East Asians; Mbuti). A larger f_3 value suggests more gene flow, indicating closer genetic affinity.

